

VS24

CARACTERÍSTICAS

Sometido a rigurosas pruebas para décadas de uso

Asistencia excepcional de nuestro equipo de Atención al cliente

ACCESORIOS

24" Black Glass Front Panel

24" Stainless Front Panel

30" Black Glass Front Panel

30" Stainless Front Panel

Integrated Front Panel

Large Bags - 9 1/2" x 13 5/8"

Small Bags - 7 1/4" x 10 7/8"

Wine Stoppers

Los electrodomésticos están disponibles por medio de un comerciante autorizado. Para información del comerciante local, visite subzero-wolf.com/locator.



OPCIONES DEL PANEL FRONTAL



24" DRAWER FRONT STAINLESS PANEL



30" DRAWER FRONT STAINLESS PANEL



24" DRAWER FRONT BLACK PANEL



30" DRAWER FRONT BLACK PANEL

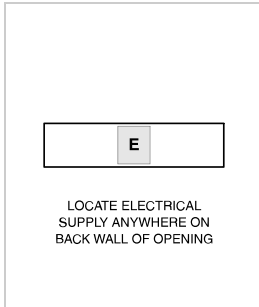


CUSTOM PANEL
Integrated Front Panel Kit Required

ESPECIFICACIONES DEL PRODUCTO

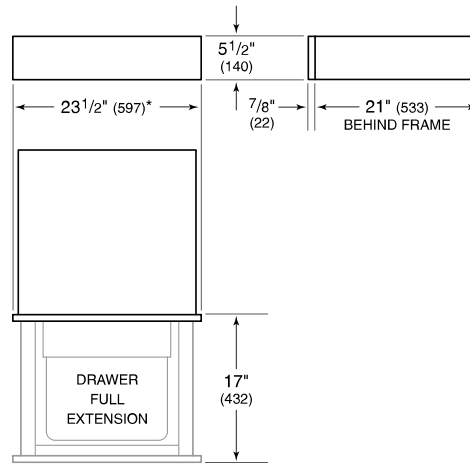
Modelo	VS24
Capacidad	0.25 cu. ft.
Suministro Eléctrico	3-prong grounding-type
Servicio Eléctrico	Circuito dedicado de 10 amperes
Longitud del Cable de Corriente	3 Feet
Receptáculo	3-prong grounding-type

ELÉCTRICO



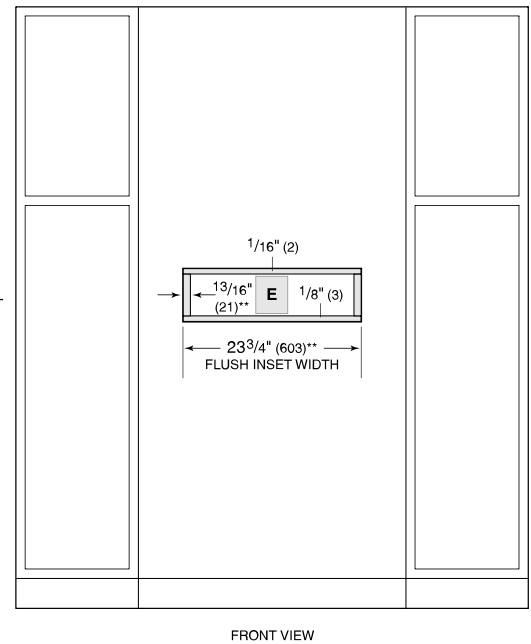
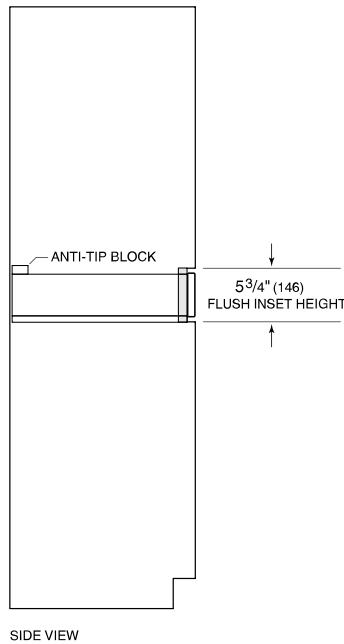
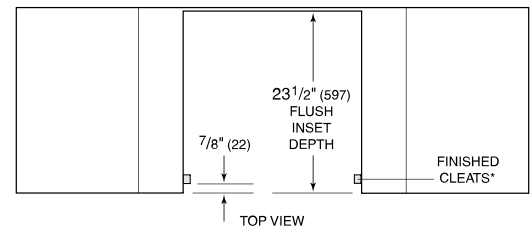
NOTE: Dimensions in parenthesis are in millimeters unless otherwise specified

DIMENSIONES



*29 7/8" (759) width for 30" panel.

FLUSH INSTALACIÓN



*Will be visible and should be finished to match cabinetry.
 **30 1/8" (765) width and 4" (102) cleat dimension for 30" panel.

NOTE: Flush inset width and height dimensions provide minimum reveals.